

# SWATCH LOVE



Knitting a swatch in colorwork without a pattern is daunting for some people. This pattern includes basic instructions that can be used as a guideline to help a knitter determine what gauge is produced when their chosen yarn and needle combination is used.

For pattern support, contact [kkunnecke@kylewilliam.com](mailto:kkunnecke@kylewilliam.com).  
To learn more about Kyle and his work, please visit [www.kylewilliam.com](http://www.kylewilliam.com).

## **GAUGE**

That's the question. Gauge will be measured over 4" in both height and width using the pattern specified.

## **SKILLS NEEDED**

Cast on, knit/purl, reading charts, finishing

## **NOTIONS**

Measuring tape, tapestry needle

## **FINISHED SIZE**

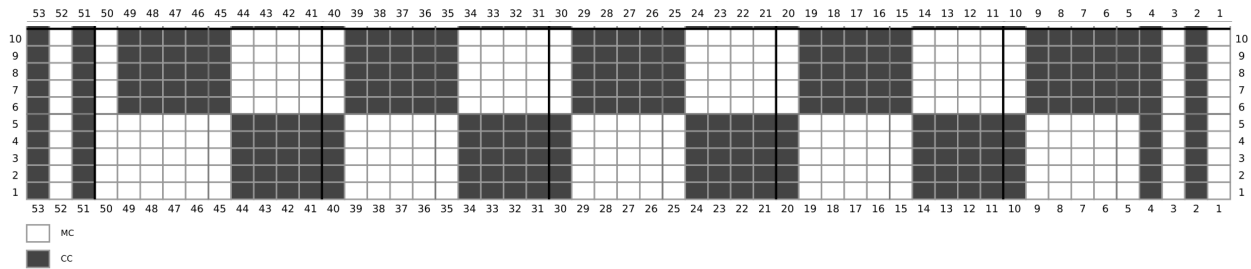
Central portion of the swatch should measure a minimum of 4" x 4" after blocking



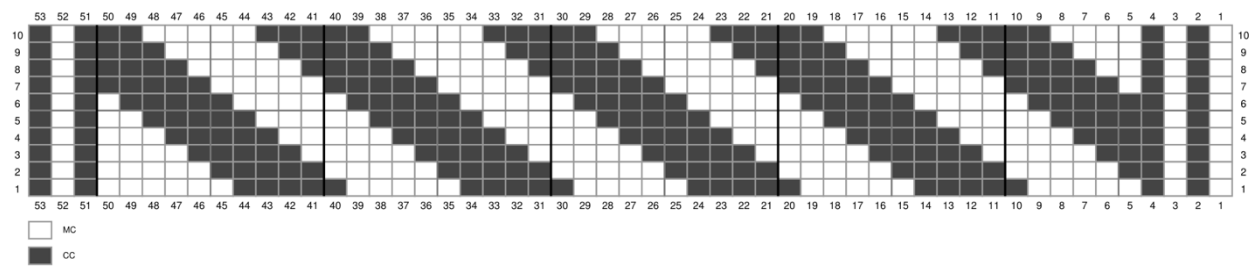
© 2020 Kyle Kunnecke. All Rights Reserved.

This pattern may not be used for commercial purposes without the written consent of the designer.

## Chart Option A



## Chart Option B



## Pattern

With MC, CO 53 sts.

Row 1: Purl

Row 2: K10, \*yo, k2tog; rep from \* X times, K to EOR.

Row 3: Purl

X = the number of times equal to the size of your knitting needle. For example, if you are using

## Begin Chart

Keeping the first and last 4 sts in alternating MC/CC as illustrated on chart. Placing markers after stitches 4 and 50 may make keeping track of these selvedge stitches easier.

Work in rows or rounds, depending on the method of knitting that is used for the project. Repeat rows/rounds 1-10 until work is large enough to produce a piece of fabric with a center section that measures 4" x 4".

Remember to keep yarns in the same order throughout swatch.

## Finishing

Gently wash and block your swatch as you intend to do with the finished object. This provides opportunity to test for colorfastness, and will also help deliver a more accurate gauge.

Your finished swatch acts as a resource for gauge and colorfastness. Consider adding a tag to the swatch before storing it in your swatch archive.

